



Dolomites  
San Vigilio


# Winter activities

San Vigilio \ La Pli \ Rina  
San Martin \ Antermoia \ Lungiarü





# Contents



6-19	Walks in San Vigilio and surrounding area
20-21	Solo snowshoe hikes
23	Top 5 must do's
24-29	Guided hikes and activities
30-33	Alpine guides programme
34-35	The FIS rules of the piste
36-39	Ski schools
40	Ski pass prices
41	Ski pass sales outlets
42-43	Winter offers
44-46	Ski rental & depots
47	Snowpark
48-49	Skiing in Antermoia
50-51	Cross country skiing
52-53	Toboggan runs
54	Kinderland San Vigilio
55	Snow Playground and Snowpark San Vigilio
56-57	Horse sleigh rides
58	Owl Park San Vigilio
59	Huskysleddog
60	Guestinfo - virtual information office
62-63	Skibus connecting Skiers & Holidaypass
64	Museums
65	Important numbers





# KRONPLATZ

PLAN DE CORONES





32 lifts and cable cars



119  
km  
of  
slopes

part of the Dolomiti-Superski-resort



34  
snow  
groomers





## Walks in San Vigilio and surrounding area

All you hear is the gentle crunching of snow. A thick white blanket swallows every sound; all that remains is the soothing silence of winter. Welcome to our winter world.





## TRU DLES LIONDES

**A1**

📍 Hotel Aqua Bad Cortina

🕒 1 hour

We invite everyone to walk the trail about the amazing legends of the “Fanes Kingdom”.



## SAN VIGILIO – LÉ DLA CREDÀ

**B**

📍 End of Str. Fanes

🕒 1 hour 15 min

Walk through the Pes-Pesc playground, along the snow-ploughed track parallel to the cross-country ski trail, just before the Sport-zone Ciamaor. Through the forest path to the left of the football pitch continue left above the Horse Trekking Mareo to Lé dla Creda.



## SAN VIGILIO – FODARA MASARONN

**C**

📍 End of Str. Fanes

🕒 2 hours

To Lé dla Creda, see path B; then continue on the forest path and follow it to Fodara Masaronn. Attention: the pedestrians who, despite the prohibition, run the cross-country ski run are in any case responsible for accidents that may happen.

## BRÜSCIA

D

🕒 Hotel Monte Paraccia ⌚ 1 hour

Uphill to the drinking water reservoir; then turn right to Ciamaor and on the footpath back to San Vigilio.



## SAN VIGILIO – TORPĚI – PINĚI

E

🕒 Hotel Monte Paraccia ⌚ 1 hour

Uphill to the hamlet of TorpĚi, past the farms to the hamlet of PinĚi and then back to the village.



## SAN VIGILIO – CHI VAI – TORPĚI

F

🕒 Miara cable car ⌚ 2 hours

Follow the signs „A SorĚdl“, then continue to hike on the forestry road to the hamlet of TorpĚi. There are two options for the way back; on the left, the path leads to the hotel Monte Paraccia, on the right, you get to the lower cable car station Miara.





## SAN VIGILIO – VAL – COSTA – RAS



📍 Miara cable car ⌚ 1,5 hours

Follow the road to the hamlet of Val and continue along the woodland path to the hamlet of Costa and then via Ras to San Vigilio.



## SAN VIGILIO – SARJËI



📍 Hotel Les Alpes ⌚ 1 hour

From the village centre hike towards Valiares. There, follow the woodland path in the direction of Sarjëi until you reach the two refreshment stops „La Para“ and „Soleseid“.



## SAN VIGILIO – CIASÉ



📍 Start of the road to Ciasé ⌚ 1 hour

To the Zona Artigianale Gran Pré; turn right at the Ciasé farm; continue up a gentle slope until you reach the Bella Vista Hotel Emma; return to San Vigilio on the footpath.



## SAN VIGILIO – PASSO FURCIA K

🕒 Miara cable car    ⌚ 2 hours

Up to the Hotel Spaces, from there to the hamlet of Rara; turning right along the woodland path, you reach Passo Furcia.



## RODA DLES VILES - TOUR OF HAMLETS N

🕒 Pieve di Marebbe/ La Pli    ⌚ 2-4 hours

Various hikes (A or B) lead to the hamlets of Brach, Ciaseles, Frontü, Cianoré, Biëi, Fordera, Frena and La Costa. From each hamlet the next closest one is visible and connected by roads and paths.



## A SORÄDL – THEMED WALK O

🕒 Miara cable car    ⌚ 2 hours

Following the signs for „A Sorëdl”; the route runs past Ras and Costa. Walk through the woods via Val to the Torpëi farmhouse. From there, turn left along the tarmac road to get back to the village.





## PEDERÜ – FANES (2042 m) 9

📍 Pederü ⌚ 2 hours

The access road takes you to Alpe di Fanes. The Alpine huts Fanes and Lavarella are open in winter. Tip: Hike to Passo Limo, 15 minutes' walk from the Fanes hut, with beautiful panoramic views of the "Fanes Kingdom".



## PLAN DE CORONES – PANORAMA PATH S

📍 Plan de Corones, Museum MMM Corones ⌚ 1 hour 15 min

From the Museum MMM Corones walk down to the cross from which a breathtaking panorama opens up, stretching across the Dolomites and all three villages of the municipality of Marebbe. Continue downhill to the Graziani refuge. Return along the same route.



## PEDERÜ – FODARA VEDLA – SENES 8

📍 Pederü – Fodara Vedla (1,980 m) ⌚ 1,5 hours

📍 Pederü – Fodara Vedla – Senes (2,116 m) ⌚ 2 hours

From Pederü, the road takes you up to the Alpine huts Rifugio Fodara (closed in winter) and Rifugio Sennes.

## RINA – MALGA DI RINA T

⦿ Sports ground Rina   ⌚ 1,5 hours

The cleared hiking path takes you to Munt da Rina/Malga di Rina (closed in winter). Return to the playing fields in Rina via the same route.



### Legend

- ⦿ = Starting point   ⦿ = Circular path   ⌚ = Time uphill  
N = Note on the hiking map San Vigilio - San Martin



# Walking paths from Antermoia - Passo delle Erbe



## RODA DE BÖRZ

A

🕒 Passo delle Erbe ⌚ 1,5 hours

The hike leads along the prepared forestry road below Sasso Putia.

Note: Hikers please avoid the cross country skiing track.



## PASSO DELLE ERBE – COSTACES

B

🕒 Passo delle Erbe ⌚ 45 min.

Above the hut Ütia de Börz, you can enjoy a circular walk on the prepared forestry road in both directions to the view point Costaces.

## PÉ DE BÖRZ – MONTE MURO C

📍 Parking place Pé de Börz ⌚ 2 hours

This walk offers wonderful views of Sasso Putia; all you have to do is follow path No. 1 to the Alpine hut Rifugio Monte Muro (closed in winter).



## ANTERMOIA – PASSO DELLE ERBE D

📍 Handcraft area Antermoia ⌚ 2 hours

Follow path No. 1B to the mountain station of the ski lift and from there, on the way to Monte Muro, keep left until you reach the car park Pé de Börz. Turn left behind the barrier and continue for about 30 minutes to Passo delle Erbe.





BERGSTEIGER  
DÖRFER

LUNGIARÜ

# Walking paths from Lungiarü



PARES – MUNT D'ADAGN



📍 Parking place Pares ⌚ 1,5 hours

The prepared forestry road No. 5, 5A gently ascends through the woods to the Munt d'Adagn meadows.

LUNGIARÜ – VAL DI MORINS



📍 Church square Lungiarü ⌚ 2 hours

The road leads south-westwards towards Frëina. After the bridge there is a path to the left leading to Lüch de Vanc. Val di Morins, the mill valley, begins at a stream just before the bridge.



## LUNGIARÜ – VI

⦿ Church square Lungiarü ⌚ 30 min.

Starting from the centre of Lungiarü, follow the road signs to the hamlet of Vi/Vigo. Keep to the road that ascends steeply, to the left of Hotel Sanví. Still walking on the asphalt road, you will reach Ví, where a beautiful view of the lower village opens up. The walk, which is on the sunny side of the village, is particularly recommended in winter.



# Walking paths from San Martin



„TRU VISTLES“



⦿ Church square San Martin ⌚ 1 hour & 15 min

Walking along the Rio Gadera this themed walk combines nature, culture and tradition with games and information boards.



PICOLIN – JU



⦿ Parking place cable car Piculin ⌚ 1,5 hours

Take the footpath towards San Martin de Tor to the bridge. Turn left and walk along the tarmac road to the viewpoint Ju. You can return via cable car.

## PIZ DE PLAIES M

🕒 Piculin lift (top station) ⌚ 45 min.

The trail starts at the top station of the Piculin cable car, or the Piz de Plaies lift on Col dl'Ancona, passes by Alpinus Agriturismo and ends at the summit of Piz de Plaies. The return can be made along the same trail or via the descent to the hamlet of Ju and then back to Col dl'Ancona.



## SAN MARTIN – LOVARA – COSTA K

🕒 Tourist office San Martin ⌚ 1,5 hours

Take the road opposite to the tourist office and pass the rest home on the left, through meadows and woods to the Lovara farm. There, the path turns left across Rio Gadera to Prerman. Further bends lead to the hamlet of Costa.



## SAN MARTIN – COL CÖCE L

🕒 Tourist office San Martin ⌚ 1 hour

Take the road opposite to the tourist office and pass the retirement home on the left, through meadows and forest to the Lovara farm. There the path turns left after the bridge to the quarry. Cross the road there and continue on the slight-ly ascending path to the viewpoint Col Cöce.





# Solo Snowshoe hikes

In our two Nature Parks there are many opportunities for snowshoe hikes, suitable for beginners and experts alike. Since the hiking trails are not visible in winter, it might be very difficult to find the way, so we recommend you to discuss the tours with an expert beforehand.

A full-page photograph of two women cross-country skiing on a snowy mountain slope under a clear blue sky. The woman in the foreground is wearing a black beanie, a white and black jacket, and bright yellow-green pants. The woman in the background is wearing a white beanie, a teal jacket, and white pants. A wooden cabin is partially visible on the left, and snow-covered mountains are in the background.

information on  
avalanche danger:

[www.avalanche.report](http://www.avalanche.report)



# TOP 5 MUST DO'S

---

## WINTER

- 1 Getting together with friends to build a snowman  
[#snow](#) [#fun](#) [#snowman](#)
- 2 Enjoying a guided snowshoe hike with our mountain guides in the nature park Fanes-Senes-Braies  
[#winter](#) [#wonderland](#) [#dolomites](#)
- 3 Conquering the “black five”, the five black pistes on Plan de Corones, in a single day  
[#skiing](#) [#kronplatz](#) [#bestskiresort](#) [#onlythebest](#)
- 4 Take a photo with the winter panorama at Plan de Corones  
[#bestpanorama](#) [#fun](#) [#surroundedbydolomites](#)
- 5 Walking through the beautiful winter panorama at the foot of Sasso Putia on cross country skis  
[#silence](#) [#bestpanorama](#) [#nature](#) [#sport](#)





# Guided activities

Trained mountain and hiking guides will accompany you on exciting excursions and bring you closer to the diversity of the winter mountain world.

- > Equipment: warm clothing and waterproof mountain winter shoes
- > Possible rescheduling or cancellation due to weather conditions
- > Reservation: at tourist offices in San Vigilio and San Martin or online at [www.sanvigilio.com](http://www.sanvigilio.com)

## LEGEND



Date



Price



Total duration (attention: the return time may vary)



Meeting point



Registration until



MONDAY



## Cross country skiing taster course

Here, the ski instructors of the Ski School San Vigilio introduce you to the first steps of cross country skiing. Take your time and try a new sport! Equipment can be hired from the rent Snow Shop until 12.30 pm. Minimum age 14 years.



09.01. – 20.03.2023



3:00 pm - 4:30 pm



15,00 €  
+ 10,00 € equipment hire

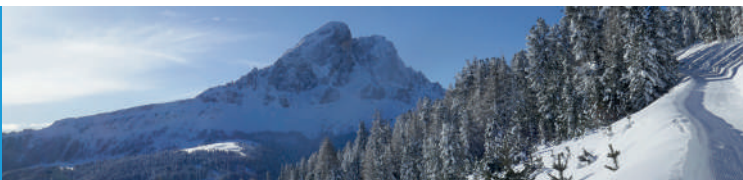


Start of the cross country track



Registration until 12:00 noon of the same day

TUESDAY



## Winter hike to Monte Muro

During the ascent to Monte Muro, follow an easy path through evergreen forests and softly snow-covered meadows. When you reach the summit, a spectacular panorama opens up before you, sweeping 360 degrees from Val Badia to Val Pusteria, dotted with some of the most famous peaks in the Dolomites.



27.12. – 28.03.2023



9:30 am - 4:00 pm (3 hrs. of hike)



25,00 €

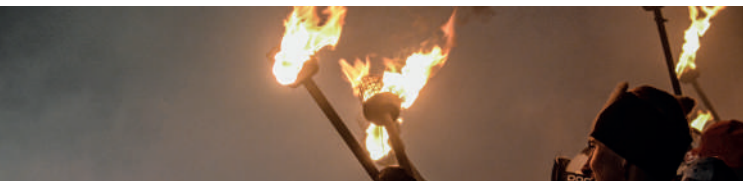


Antermoia, parking area Pe de Börz



Registration until 5:00 pm of the previous day

TUESDAY



## Night-time hike by torchlight along Val di Marebbe

The idyllic torchlight hike along Val di Marebbe promises a pleasant atmosphere for young and old. Afterwards we invite you all to a warm drink at the Hotel Aqua Bad Cortina.



27.12. – 28.03.2023 (21.02. excluded)



6:00 - 7:00 pm



10,00 €



Tourist office San Vigilio



Registration until 12:00 noon of the same day

WEDNESDAY



## Dolomiti Ranger - Wildlife Observation in the snow

What can we learn from feathers, furs, horns and antlers? What do we have to keep in mind when observing wild animals? When do animals need protection? On this hike, our young explorers get a chance to sharpen all five senses and, with a bit of luck, even spot a chamois or deer! Supported by Swarovski Optik & Visitor Center Nature Park.



28.12. – 29.03.2023



9:30 am - 12:30 pm



15,00 €  
8,00 € children until 12 years



Nature Park visitor center, San Vigilio



Registration until 5:00 pm of  
the previous day

WEDNESDAY



## Biodiversity, the variety of life - guided tour

The precious treasure of biodiversity is under threat worldwide. Never before, the loss of biodiversity has been as rapid as it is today. The guided tour through the exhibition invites you to learn about the importance, conservation and beauty of biodiversity and aims to convey a sense of what diversity of life means - also in our everyday lives.



28.12. – 29.03.2023



5 pm - 6 pm



free



Nature Park visitor center, San Vigilio



No registration required



THURSDAY



## Dolomiti Ranger - Searching for traces in the snow

On this family walk you will discover all the tricks that the animals in the Nature Park have developed to survive during the cold season. With help from a ranger, children and parents will learn together how to interpret animal tracks in the forest. After the adventure in the snow, you can warm up with a good hot tea in the Visitor center.



09.12. | 29.12. | 05.01. | 16.02. | 23.02.2023



2:30 - 5:30 pm



Nature Park Visitor center, San Vigilio

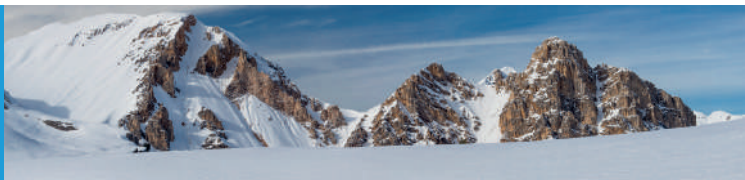


15,00 €  
8,00 € children until 12 years



Registration until 5:00 pm of  
the previous day

THURSDAY



## Guided hike to Fanes

It is not surprising that, for thousands of years, the Fanes plateau and its mountains have inspired stories and legends. Starting at the Pederü, our guide will take you to the mountain pasture Fanes, at 2,000 metres. Snow-covered groves and frozen lakes form the backdrop for this hike, where legend becomes reality.



29.12. – 30.03.2023



9:00 am - 3:00 pm (3,5 hrs. of hike)



San Vigilio, Pederü hut



25,00 €



Registration until 5:00 pm of  
the previous day

FRIDAY



## Hunters of the night - Lecture and guided tour at Owl Park San Vigilio

The fauna of the Dolomites includes many types of known and easily sighted animals, such as squirrels and deers, but also as many difficult to see and hear, especially in the world of birds of prey. After an introduction (*only in italian!*) in the Visitor center of the Nature Park, we will drive to the Owls Park, where Mario will show and tell us the peculiarities of his feathered friends.



30.12. – 31.03.2023



5:00 - 7:00 pm



12,00 €  
8,00 € children until 12 years



Nature Park Visitor center, San Vigilio  
(transfer to the Owl Park in your own vehicle)



Registration until 12:00 noon  
of the same day

FRIDAY



## Easy snowshoe hike by moonlight

The moonlight, reflected on the snow-covered ground, reveals for you our fabulous Dolomites, which show themselves in a unique and spectacular new guise. Upon returning to the start, we warmly invite everyone to a hot drink.



06.01 - 24.03.2023



8:30 - 10:00 pm



15,00 € snowshoe hire included



Center of Lungiarü (Infopoint)



Registration until 12:00 noon  
of the same day

# Mountain guides programme

To explore our snow-covered mountains in safety, we recommend you book our mountain guides or join their group programme. Max and Simon will accompany you on snowshoeing or exciting ski mountaineering trips, freeride descents or ice climbing that will make you love the mountains even more.

Information and registration (also via whatsapp):

Max Willeit: Tel. (+39) 33 68 49 422

Simon Kehrer: Tel. (+39) 389 42 23 062

Our office is in the mountains, so we are often not available during the day. Please leave us a message and we will reply in the afternoon/evening. Registrations must be made to guarantee excursions by 7 p.m. 2 days before the activity. By 7 p.m. the day before, feasibility is no longer guaranteed.



MONDAY or on request



## Easy snowshoe hike

3-hour snowshoe hike, suitable for everyone, through the forests and meadows of San Vigilio. This guided snowshoe hike is a wonderful taste of winter nature.



05.12. – 13.03.2023



09:30 - 12:30 pm or  
1:00 - 4:00 pm



50,00 € (+6,00€ snowshoe rental)



San Vigilio, Visitor center Nature Park  
Fanes-Senes-Braies

TUESDAY



## Ski touring course for beginners

Introduction to ski mountaineering with an explanation of ascent techniques in a beautiful natural setting. Ski mountaineering equipment can be hired from ski rental shops. Participants are provided with a safety kit (arva, shovel, probe).



13.12. - 07.03.2023



9:00 am - 1:00 pm



80,00 € (safety kit included)



San Vigilio, Visitor center Nature Park  
Fanes-Senes-Braies





WEDNESDAY



## Snowshoe hike discovering the Natural Parks

With the fascinating formations of the Dolomites before your eyes, this snowshoe hike leads you through the pristine landscape of the Fanes-Senes-Braies Nature Park or the Puez-Odle Nature Park. A safety kit (arva, shovel, probe) is provided.



07.12. – 15.03.2023



9:00 am - 3:00 pm



90,00 € (safety kit is included)  
+12,00€ snowshoe rental



San Vigilio, Visitor center Nature Park  
Fanes-Senes-Braies

THURSDAY



## Off-slope freeriding in the Dolomites

After ascending with the lifts we ski off-piste on the most famous routes in the Dolomites: Marmolada, Val Mezdi, Cinque Torri, Tofana. Freeride ski equipment can be hired at ski rental shops.



15.12. - 16.03.2023



8:00 am - 5:00 pm



140,00 € (safety kit included)



San Vigilio, Visitor center Nature Park  
Fanes-Senes-Braies

THURSDAY or on request



## Night snowshoeing

Snowshoeing around San Vigilio to immerse yourself in the night-time atmosphere, seeing stars and nocturnal animals.



08.12. – 16.03.2023



San Vigilio, tourist office



8:30 - 11:00 pm



40,00 €

+8,00€ snowshoe and headtorch rental

FRIDAY



## Ski touring day

Ski mountaineering tour to be determined according to snow conditions and group capabilities. The safety kit (arva, shovel, probe) is provided.



16.12. - 17.03.2023



to be fixed on request



8:00 am - 4:00 pm



from 130€/pers.



# The 12 FIS rules of the piste

1. Do not endanger or harm other skiers
2. Adjust your speed and skiing style to the conditions
3. The skier coming from behind must not endanger the skier in front
4. You may only overtake at a distance that leaves sufficient room for the skier you are overtaking
5. After a stop check before skiing on that there is no danger from above or below
6. Do not stop in narrow or blind spots on the piste
7. Walkers please use the edge of the piste;  
Except for emergencies, ascending on a piste is always prohibited
8. Every skier must observe the markings and information signs
9. Everyone is required to assist in the eventuality of accidents
10. In the event of an accident, everyone, whether witness or participant, must hand over their personal details
11. Keep a safe distance to the edge of the piste and to other skiers
12. Skiers must leave others enough space on the piste



### **Liability insurance covering damages to third parties**

Everyone making use of ski resorts in Italy must hold liability insurance which covers damages to third parties. The insurance isn't included in the cost of your skipass, but you can buy single-day coverage at the points of sale of the skipass.

### **Helmets**

Helmets are mandatory for under-18s on the slopes for all winter sports.

### **Alcohol**

The blood alcohol content limit for skiers is 0.5‰ BAC.



# Ski Schools

Our ski and snowboarding schools teach you that perfect swing of the hips! There is a comprehensive offer of courses for young and not so young, beginners and everyone who would like to improve their technique. All three schools provide group lessons, individual lessons and their own offers for skiers and snowboarders. Learning with our qualified ski instructors on perfectly groomed slopes is great fun!



## Italian Ski School San Vigilio



Offices: Entrance to the village, village center and at the foot of the ski slope Pedagà

Tel. (+39) 0474 501 049 | Cell. (+39) 3357 275 590

[www.scuolasci.net](http://www.scuolasci.net) | [info@scuolasci.net](mailto:info@scuolasci.net)

# Ski School Top Ski Piculin



Office: Village center – Catarina-Lanz-Str. 17

Tel. (+39) 0474 506 078

[www.topskisanvigilio.com](http://www.topskisanvigilio.com)

[info@topskisanvigilio.com](mailto:info@topskisanvigilio.com)





## Ski - and Snowboardschool Sporting Al Plan



**SKI  
SPORTING  
ACADEMY**

[www.skisporting.com](http://www.skisporting.com)  
[info@skisporting.com](mailto:info@skisporting.com)

Office Miara  
Str. Plan de Corones 76  
Tel. (+39) 0474 506152

Office Centre  
Str. Catarina Lanz 40  
Tel. (+39) 0474 501448

# Ski pass prices

**DOLOMITI  
SUPERSKI**



	<b>Kronplatz</b> 119km of slopes	<b>Dolomiti Superski</b> 1.200km of slopes
<b>Off - season</b> 26.11.22 – 24.12.22		
1 day	59,00€	63,00€
6 days	295,00€	317,00€
<b>High season</b> 25.12.22 – 07.01.23 29.01.23 – 18.03.23		
1 day	69,00€	74,00€
6 days	347,00€	373,00€
<b>Season</b> 08.01.23 – 28.01.23 19.03.23 – 23.04.23		
1 day	61,00€	66,00€
6 days	312,00€	336,00€

Price quoted is for adults. For juniors (born after 26.11.06) and senior citizens (born before 26.11.57) discounts on ski passes are available. Children born after 26.11.2014 receive a free ski pass. From April 17th only a few lifts and slopes will be open. For more information go to: [www.kronplatz.com](http://www.kronplatz.com)



**Ski pass  
sales outlets**

*Saturday: 8:30 am – 7:00 pm*

*Saturday: 8:00 am – 6:00 pm*

*Ticket Box - Str. Plan de Corones 38*

41



# Dolomiti Super Première

Enjoy the first snow!



**26.11.2022 - 24.12.2022**

**> from 4 days holidays  
1 night + 1 day free ski pass**

Guests receive a 20% discount on ski equipment rental at participating ski rentals and a 15% discount at participating ski schools. Offer only valid if you book in a participating accommodation.



## Dolomiti Spring Days

Longer skiing days with plenty of sun!

**18.03.2023 - 24.03.2023**

> 7 days of holiday

1 overnight stay + 1 day free ski pass

**25.03.2023 - 23.04.2023**

> from 4 days holidays

1 night + 1 day free ski pass

Guests receive a 20% discount on ski equipment rental at participating shops and a 15% discount at participating ski schools. Offer only valid if you book in a participating accommodation.

# Ski Rental

Who doesn't know the problems of wrestling ski equipment into the car, carrying heavy skis etc... Why bother? With the competent equipment rental companies in San Vigilio/San Martin you get everything you need for a beautiful day of skiing. The gentle way!

Select your personal favourites from the diverse offer of the latest winter sport equipment in our ski rental outlets. Whether skis, snowboards, skiing boots, cross country, Telemark skis or touring skis; there is something there for everyone, from beginner to expert! Let yourself be convinced by the quality and the unsurpassed services of the ski rental shops of San Vigilio and San Martin.



## ANDREA & MARCO

Str. Catarina Lanz 12  
Tel. (+39) 0474 501 176  
Mob. (+39) 333 444 71 48  
comploi.andrea@virgilio.it  
www.skirent.bz

## CIANROSS

Str. Valiares 31  
Tel. (+39) 333 321 98 02  
info@skiareamiara.it  
www.skiareamiara.it

## LE SKI POINT TAMERS LUIGI

Str. Senes 21 | Corner Str. Plazores  
Tel. (+39) 0474 503 663  
Mob. (+39) 333 353 50 51  
info@leskipoint.com  
www.leskipoint.com

## PEPISKI MASTER

Str. Catarina Lanz 44  
Mob. (+39) 335 372 881  
info@pepiski.com  
www.pepiski.com

## SPORT HEINZ

Str. Catarina Lanz 17  
Tel. (+39) 0474 506 078  
Mob. (+39) 338 853 61 12  
info@sport-heinz.com  
www.sport-heinz.com

## KEHRER HANNES

Str. Valiares 30 - Str. Catarina Lanz 36  
Mob. (+39) 347 725 56 79  
info@noleggiosci.com  
www.noleggiosci.com

## MIARA

Str. Plan de Coronas 76  
Tel. (+39) 0474 506 383  
info@skiareamiara.it  
www.skiareamiara.it

## SCUOLA SCI SNOW SHOP RENTAL & SERVICE

Str. Catarina Lanz 14/2  
Tel. (+39) 0474 501 029  
snowshop@scuolasci.net  
www.scuolasci.net

## TOPSKICENTER KRONPLATZ

Top of Plan de Coronas  
Mob. (+39) 349 693 13 93  
info@topskicenter.com  
www.topskicenter.com

## SKISERVICE PIC ANT

Str. Picolin 55  
Tel. (+39) 0474 523 339  
info@picant.it  
www.picant.it



# Ski-Depot

SAN VIGILIO

## CIANROSS

*Str. Valiaries 31*  
*Tel. (+39) 333 321 98 02*  
*info@skiareamiara.it*  
*www.skiareamiara.it*

## TOPSKICENTER KRONPLATZ

*Top of Plan de Corones*  
*Mob. (+39) 349 693 13 93*  
*info@topskicenter.com*  
*www.topskicenter.com*

## KEHRER HANNES

*Str. Valiaries 30 - Str. Catarina Lanz 36*  
*Mob. (+39) 347 725 56 79*  
*info@noleggiosci.com*  
*www.noleggiosci.com*

## MIARA

*Str. Plan de Corones 76*  
*Tel. (+39) 0474 506 383*  
*info@skiareamiara.it*  
*www.skiareamiara.it*

SAN MARTIN

## SKISERVICE PICANT

*Str. Picolin 55*  
*Tel. (+39) 0474 523 339*  
*info@picant.it*  
*www.picant.it*



# Snowpark Plan de Corones


Jumping, sliding, rotating and somersaulting. Here, everything is permitted. Welcome to the discipline of freestyle. The park on the slope Belvedere offers enthusiasts and beginners the ideal line of fun: Family Fun Line, Easy Line, Medium Rail Line, Medium Kicker Line.



# Skiing in Antermioia Passo delle Erbe

---





The ski lift in the center of Antermoia and the associated ski slope Antermoia are small but perfect. Here, families with children can practice their first steps on skis on this accessible slope. The ski region is also ideally suited for all kinds of races and training sessions and you can also book a ski instructor.

## WINTER OFFERS 2023

- \* For all children under 12 years old and seniors over 65 years old, skiing in Antermoia is for free!!  
09.01. - 12.03.2023 (except 18.02 - 26.02.2023)
- \* 2 days of Ski-Safari  
(Alta Badia - Tre Cime - Marmolada - ...)  
22.01 - 04.02.2023
- \* Adventure in the Dolomites,  
UNESCO World Heritage  
05.02 - 12.02.2023

Only by booking in participating structures; for more information:  
[www.sanvigilio.com](http://www.sanvigilio.com)



## RAUTAL - PEDERÜ

This cross-country track winds through the Rautal, the gateway to the Nature Park Fanes-Senes-Braies. Passing through snow-covered forests, frozen streams and meadows sleeping under a white blanket of snow, the track ends in Pederü, a beautiful finishing point where you will also find catering facilities. The piste is prepared for both classic and skating styles.





# Cross country skiing

Freshly fallen snow, trees looking like winter postcards, a cobalt blue sky and the quiet sounds of nature along the cross country ski tracks.

Experience our unique cross country skiing tracks in the valley and high up in the mountains.

## PASSO DELLE ERBE CIRCULAR TOUR

📍 Passo delle Erbe 🔄 6 km

Sports enthusiasts and nature lovers should not miss the cross country skiing piste on Passo delle Erbe. At an altitude of 2.000 m the prepared cross country ski track runs across the mountain meadows at the foot of the majestic Sasso Putia, covered in pure natural snow. Please note: there is also a footpath near the cross-country ski trail.

# Toboggan runs

ON YOUR MARKS, GET SET, GO!

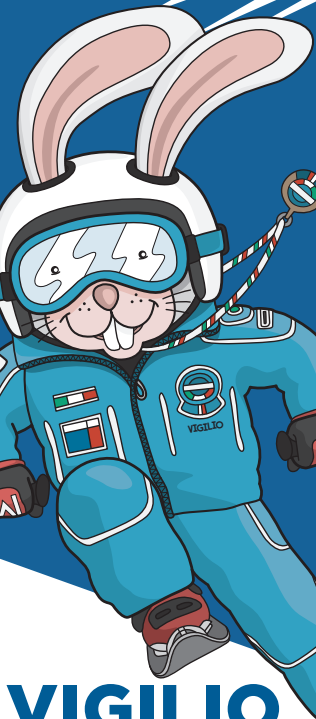




The “Cianross” toboggan run in San Vigilio starts at the lower cable car station of the lift of the same name and runs through the forest, parallel to the ski piste, to the lower cable car station. This run has the same operating times at the Cianross cable car; the ski pass is your ticket, as are the point card and single tickets. There is also a toboggan hire.



The popular toboggan run starts at Passo delle Erbe. The ascent starts at Fornella (above Antermoia) where you can also park your car. Stay on the road for the first 100 m, then turn right on the path to the mountain Monte Muro. At the Pé de Börz car park, follow path No. 1 to Passo delle Erbe. You can also get to the starting point by car.



**VIGILIO  
CLUB®**



## Kinderland San Vigilio

Mum and Dad would like to enjoy the pistes but don't know what to do with their little ones? They are perfectly looked after in the snow kindergarten Kinderland of the Ski and Snowboard School San Vigilio

- › Skiing courses and a fantastic play programme including without skis
- › Fenced and secured grounds in the centre of San Vigilio
- › Trained childminders and ski instructors
- › Delicious lunch with freshly prepared dishes
- › Supervised activities for children from 3 to 12 years



**SCUOLA SCI  
SAN VIGILIO DI MAREBBE**  
— SINCE 1934 —

# Snow Playground

This is an area prepared with easy jumps and fun features situated between the usual ski pistes and the well known snowparks. The snow playground is located directly next to the Pedagà slope in San Vigilio.

## Snowpark San Vigilio

Make snowballs, build snowmen and go tobogganing! With bobs, toboggans and maxi donuts your children can enjoy themselves on the snowy hill in the centre of San Vigilio near to the church until late evening.







## Registration

Ski hire Andrea & Marco

(+39) 0474 501 176 | (+39) 333 444 71 48  
[comploi.andrea@virgilio.it](mailto:comploi.andrea@virgilio.it) | [www.skirent.bz](http://www.skirent.bz)

## Horse-drawn carriage rides

Gently trotting horses, the rhythmic sound of the bells and the gentle winter breeze in your face - this is what a romantic horse-drawn carriage ride in the cold winter is about. With children, the whole family or with friends you can discover the most beautiful places around San Vigilio.



# Owl Park San Vigilio

The owl park in San Vigilio, next to the Spiaggetta Ciamaor counts more than 90 birds, including owls and birds of prey. Lovingly kept by the owner Mario, who with great knowledge will gladly tell you the curiosities of the various species.

## Owl Park San Vigilio

Sport area | Spiaggetta Ciamaor

(+39) 393 875 5424

[kappaemme.1959@gmail.com](mailto:kappaemme.1959@gmail.com)

[www.owlparksanvigilio.com](http://www.owlparksanvigilio.com)





Huskysleddog

Antermoia - Passo delle Erbe

(+39) 351 955 0107

[info@huskysleddog.com](mailto:info@huskysleddog.com)

[www.huskysleddog.com](http://www.huskysleddog.com)

# Huskysleddog

## EXCURSIONS WITH SLED DOGS

Experience the thrill of driving a sled pulled by our beautiful Siberian Huskies. Our instructors will make children and adults experience the adventure of the „far north“ by getting in touch with nature. Our cuddle factory is waiting for you!

# Virtual tourist information

Are you looking for your nearest restaurant or the opening hours of the shops? You can access all of this information on your smart phone and tablet at:

[www.sanvigilio.info](http://www.sanvigilio.info)



# AUDI FIS SKI WORLD CUP KRONPLATZ PLAN DE CORONES

## 24. JAN 2023



SkiWorldCup



[skiworldcup-kronplatz.com](http://skiworldcup-kronplatz.com)



DOLOMITI  
SUPERSKI



## Ski bus transfer to Alta Badia (starting point of the Sellaronda)

*from 03.12.22 to 02.04.23*

From 9:00 am the ski bus connecting skiers runs every 20 minutes from the lower cable car station Picolin to Sompunt in Alta Badia.

Please note that the service is only available during Piculin lift, Sponata lift and the Sellaronda opening times

---

## From San Martin, Lungiarü & Antermoia to the cable car Piculin

*from 24.12.22 to 19.03.23*

Antermoia 8:55 am – San Martin 9:10 am – Piculin 9:20 am

Piculin 4:30 pm – San Martin 4:35 pm – Antermoia 4:50 pm

Lungiarü 8:40 am – San Martin 8:50 am – Piculin 9:00 am

Piculin 4:10 pm – San Martin 4:15 pm – Lungiarü 4:25 pm



Free

# Holidaypass Mobile in South Tyrol

During your stay in San Vigilio and San Martin, your host, as a member of the Tourist Office, will provide you with a free ticket, which entitles you to unlimited use of all public transport throughout South Tyrol, including the regional railways and ski buses. From Plan de Corones it's only 40 minutes to the skiing region Three Peaks Dolomites.

# For culture lovers



## Visitor Center Nature Park Fanes - Senes - Braies *in San Vigilio*

The Nature Park House is an open window to the Fanes-Senes-Braies Nature Park and includes information about the origin of the Dolomites.

*Tel. (+39) 0474 506 120*



## Museum MMM Corones *Top of Plan de Corones*

The MMM Corones museum is dedicated to the supreme discipline of mountaineering, strongly influenced by Reinhold Messner.  
[www.messner-mountain-museum.it](http://www.messner-mountain-museum.it)



## Museum Lumen *Top of Plan de Corones*

The Lumen offers the possibility to experience the history of mountain photography from its beginnings until the present day.  
[www.lumenmuseum.it](http://www.lumenmuseum.it)



## Emergency

---

San Vigilio pharmacy  
(+39) 0474 501 240

Health Department Val Badia  
(+39) 0474 524 552

Brunico hospital  
(+39) 0474 581 111

San Vigilio Police  
(+39) 0474 501 031

Ski pass office  
(+39) 0474 501 340

Traumacenter Riscone  
(+39) 0474 548 217

Vet  
(+39) 335 543 36 99





Visit us also  
in summer & autumn



- 1<sup>st</sup> area in South Tyrol with sustainable certification GSTC
- 2 Nature Parks, Dolomites UNESCO World Heritage
- 650 km of hiking paths
- 600 km of mountainbike routes

[www.sanvigilio.info](http://www.sanvigilio.info)

# Dolomites San Vigilio

see also

Summer activities

Cycling

Kids & Families

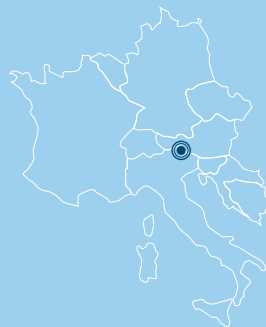
Gastronomy - Shopping - Wellness

Dolomites UNESCO & Culture

Accommodation

Follow us

@sanvigilio #sanvigiliodolomites



Tourist Office San Vigilio & San Martin  
Str. Plan de Corones 38/1  
I - 39030 San Vigilio di Marebbe (BZ)

(+39) 0474 501037  
[info@sanvigilio.com](mailto:info@sanvigilio.com)  
[www.sanvigilio.com](http://www.sanvigilio.com)